

Measurement of lamp bulb size

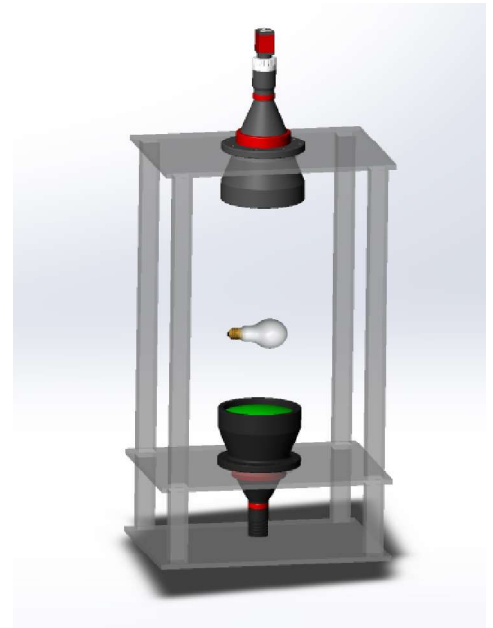
Application: Measurement of lamp bulb size

NEW TRY Products: Telecentric lens(VCM110-100-AL)
+ Telecentric illuminator(VCL-100-1W-G)

- C Mount Bi telecentricity;
- <0.1% distortion;
- Clear contour;
- Coupled telecentric illuminator.

Camera: 5MP Basler-acA2500-20gm, 1 inch CMOS@4.8um

- Resolution (H x V) 2590*2048 px



Test conclusion:

- Accuracy: Depending on different cameras resolution and image areas.
75mm × 59mm<0.028mm with 2590x2048 pixels.
- Performance: Clear image, nearly 0 distortion.
- Test image: Achieved image with high defination and great uniformity.

