

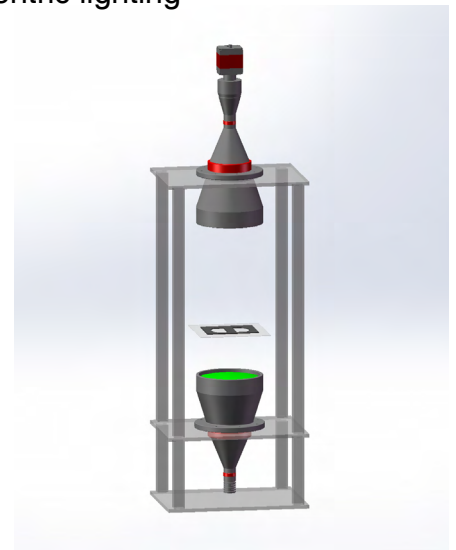
Orientation the grid of the fine mesh

Application: Orientation the grid of the fine mesh

NEW TRY Products: Telecentric lens: VCM35F-150

Illumination: VCL150-1W-G parallel telecentric lighting

- F Mount telecentricity;
- <0.1% distortion;
- High resolution with clear image;
- Perfectly measure the grid of the fine mesh.



Camera: 29MP AVT, 35mm full, 5.5 μm

- Resolution (H x V) 6600x4400px

Test conclusion:

- Ideal for measure the grid of the fine mesh.
- Accuracy: Depending on different cameras resolution and image areas 122.9mm*81.9mm <0.019 mm with 6600x4400 pixels.
- Performance: Clear image, nearly 0 distortion.
- Test image: Achieved image with high definition and great uniformity.

