

Inspect the position of keyboard

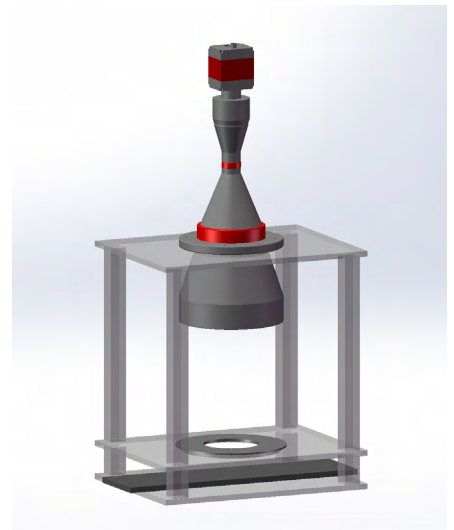
Application: Inspect the position of keyboard

NEW TRY Products: Telecentric lens(VCM35F-150) + Ring light

- F Mount Bi telecentricity;
- <0.1% distortion;
- Clear contour;
- Coupled telecentric illuminator.

Camera: 29MP GEV-B6620M-TF000, 35F(44mm), 5.5um

- Up to 6600*4400 pixels



Test conclusion:

- Accuracy: Depending on different cameras resolution and image areas.
123.89mm × 82.59mm<0.018mm with 6600x4400 pixels.
- Clear image, nearly 0 distortion.
- Test image: Achieved image with high defination and great uniformity.

