

# Inspection of Pin's position in circuit board

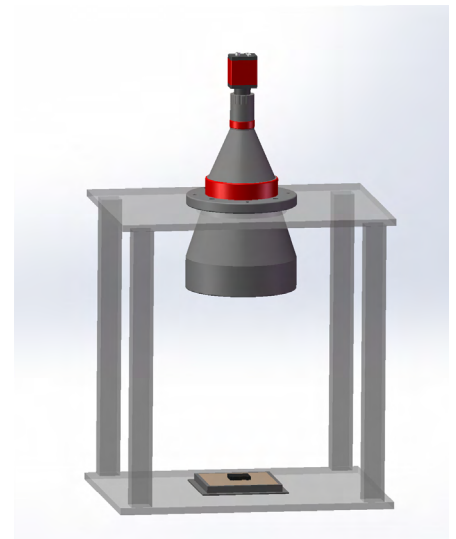
**Application:** Inspection of Pin's position in circuit board

**NEW TRY Products:** Telecentric lens(VCM230-120) + back light

- C Mount Bi telecentricity;
- <0.1% distortion;
- Clear contour;
- Coupled telecentric illuminator.

**Camera:** 5MP Basler, 2/3", 2.2um

- Up to 2592\*1944 pixels



**Test conclusion:**

- Accuracy: Depending on different cameras resolution and image areas.  
60.02mm × 45.02mm<0.023mm with 2592x1944 pixels.
- Clear image, nearly 0 distortion.
- Test image: Achieved image with high defination and great uniformity.

