

Measure the size of metal pin 3

Application: Measure the size of metal pin

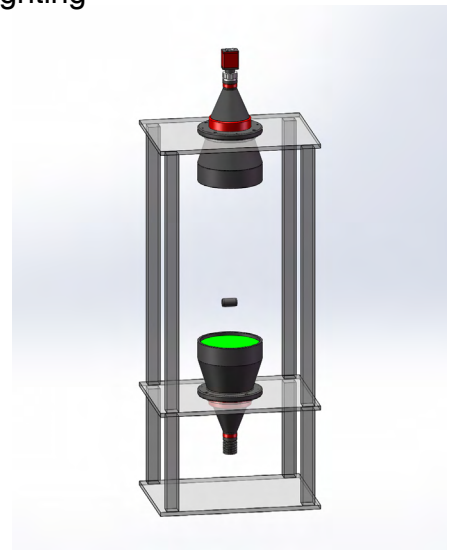
NEW TRY Products: Telecentric lens: VCM118-120

Illumination: VCL-120 parallel telecentric lighting

- C Mount telecentricity;
- <0.1% distortion;
- High resolution with clear image;
- Perfectly measure the size of metal pin.

Camera: 5MP AVT, 2/3", 3.45 μm (Sensor: 7.16mm x 5.44mm)

- Resolution (H x V) 2448x2050px



Test conclusion:

- Ideal for measure the size of metal pin
- Accuracy: Depending on different cameras resolution and image areas.
95.5mm*72.5mm <0.046 mm with 2448x2050 pixels.
- Performance: Clear image, nearly 0 distortion.
- Test image: Achieved image with high definition and great uniformity.

