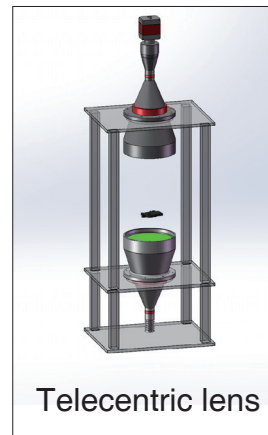
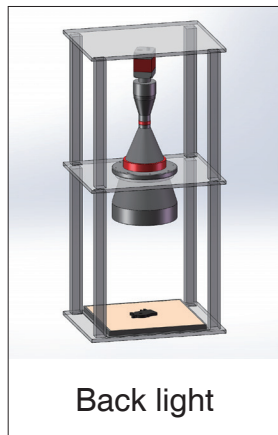


# Comparision between back light and telecentric light

**Application:** Using back light and telecentric light in turns to illuminate CPU fan shell to get individual result

**NEW TRY Products:** Telecentric lens(VCM35F-150-AL) + Back light(BAL280V280W)  
Telecentric lens(VCM35F-150-AL) + Telecentric light(VCL-150-1W-G)

**Camera:** Imperx IGV-B6620, 43.4mm, 5.5um



**Comparision result:** Magnified areas show using telecentric light can actually get a way better contour than back light.

**Test image:** Back light image has vague contour because of the diffused light on workpiece. Telecentric light eliminates light diffusion therefore distinct contour can be captured.

